

MISCELLANEOUS TRACK EQUIPMENT



CHAMFERING TOOL KIT MODEL CK-1

Used for removing the burs of drilled holes in the web of Rail and provided with

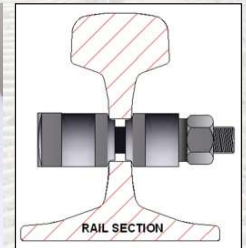
- Hardened and Tempered Chamfering Tool
- Reversible Torque Wrench, Size 12 mm x 250mm Long.
- Tension Adjusting Lever.
- Spring loaded device.
- Suitable for hole size of 32 mm [other sizes on request]



CHAMFERING TOOL KIT MODEL CK-2

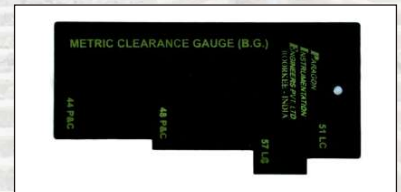
Used for removing the burs of drilled holes in the web of Rail and tightening of fish bolts.

- Hardened and Tempered Chamfering Bits
- Torque Wrench with ratchet mechanism of 1.25 m long.
- Design for high torque 100 to 400 lb. ft.
- Provided a pair of 19 mm square drive sockets of 32 mm size.
- Can also be used for tightening fish bolts to specified torque.
- High tensile bolt contains the chamfering bits & packing spacers.



CLEARANCE GAUGE MODEL C-1

- Used for measuring clearances at points, check rails and wing rails.
- Made of steel.
- Engraved / Etched figures in metric units
- Available for Standard Gauge, Broad Gauge and Meter Gauge.



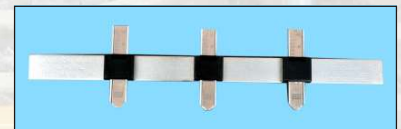
TAPERED GAUGE

- Used for measuring clearances and gaps on railway track.
- Made of steel.
- Duly graduated from 1 mm upto 25 mm.



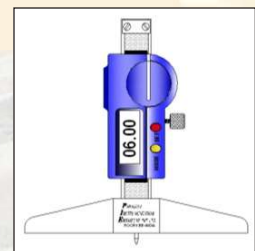
VERTICAL WEAR MEASURING GAUGE

- Used for Measuring vertical wear at nose of crossing
- Made of Alloy Steel
- Least Count 1 mm



RAIL LINE CORROSION MEASURING DIGITAL GAUGE

- Used for measuring the depth of cavity developed due to corrosion of rails.
- Direct reading on LCD display.
- Provided with hardened steel pointer.
- Measuring Accuracy ± 0.01 mm.



SENSITIVE SPIRIT LEVEL MODEL SL – 2

- Made of high tensile alloy tubing
- Has double housing to withstand falls
- Provided with arrangement for subsequent adjustment
- Accurate to 0.70 mm/ meter
- Optional Storing Box available



MAGNETIC BASE RAIL THERMOMETER MODEL MFMBT-A

- Pocket size & time tested rugged thermometer
- Has a prismatic mercury capillary
- Double Metal Housing
- Magnet does not get demagnetized even at high temperature
- Conform to NPL & RDSO Standards
- 5° to 85°C Measuring Range



MISCELLANEOUS TRACK EQUIPMENT



RAIL WELDING STRAIGHT EDGE [1 METER AND 1.5 METERS]

- Used for checking flatness and measuring evenness of welded rails.
- Made of special alloy with grade accuracy as per IS-2220-1990.
- Size – 1000x50x9 mm.
- Optional - provided with a notch/slot detachable holding Handles.
- Accuracy - Straightness & Parallelism within ten microns.



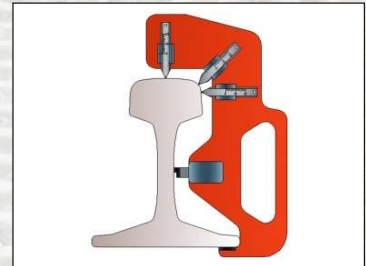
RAIL WEAR GAUGE MODEL RWG-1

- Measures head wear and side wear of the Rail
- Measuring range 0- 18 mm.
- Reading accuracy ± 1.0 mm
- Light in weight
- Easy to use.
- Available for different rail sections.



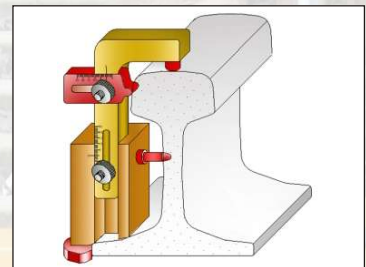
RAIL WEAR GAUGE MODEL RWG-2

- Measures head wear, side wear and radius wear of a particular rail section
- Measuring range 0- 15 mm.
- Reading accuracy ± 1.0 mm
- Full metal construction
- Each gauge is customized for a particular rail section



RAIL WEAR GAUGE MODEL RWG-3

- Measures head wear and side wear of the Rail
- Measuring range 0- 20 mm.
- Reading accuracy ± 1.0 mm
- Full metal construction
- Each gauge covers at least two different rail sections



RAIL PROFILE GAUGE CUM RECORDER MODEL RPG-III

- Measures & Records Rail Head Profile
- Available for 52 KG and 60 UIC rails (Other sections on request)
- Records a rail profile in less than ten minutes
- Tracing and graph paper record created simultaneously



Paragon Instrumentation Engineers Pvt. Ltd.

Roorkee • Noida (NCR) • Lucknow

Tel: +91 97600 91791, +91 1332 272386

Fax: +91 1332 272394

Toll Free: 1800 123 2386

Email: sales@paragoninstruments.com