

TRUPULSE® 360° LASER RANGEFINDER



The TruPulse 360 is the premier, professional-grade measurement and mapping laser rangefinder. Having LTI's exclusive TruVector 360° Compass Technology® built in, its measurement capabilities go far beyond just calculating distances and heights. Now with improved performance, the new TruPulse 360 has set the bar even higher, giving professionals the ability to do their job faster, safer and more efficiently.

New and Improved!

- 33% more precise
- 25% better target acquisition
- Increased azimuth accuracy
- Bluetooth® communication included
- 2-year limited warranty

TruVector 360° Compass Technology

- Produces accurate and repeatable azimuth (AZ) results regardless of the tilt or pitch you use to aim the laser
- Recognizes conditions that will affect the reliability of the compass accuracy and prompts you to recalibrate



Advanced Targeting

- LTI's reflectorless technology allows you to capture data safely and conveniently to practically any target or surface type
- Capture the correct measurement to your intended target by choosing from any of the 4 targeting modes
- Consistently achieve highly accurate and repeatable results that true professionals need to do their job

Mobile Mapping

- Seamless integration with popular GPS/GNSS and GIS apps and software solutions for laser offset mapping
- Collect additional attribute data such as heights, spans and multiple values between any two remote points



Ideal Applications



GIS MAPPING

- GPS/GNSS Laser Offsets
- Attribute Data Collection
- Elevation Values



PUBLIC WORKS

- Asset Mapping
- Land Use Planning
- Tree Inventory



NATURAL RESOURCES

- Habitat Mapping
- Archeology
- Stockpile Volumes

PARAGON INSTRUMENTATION ENGINEERS PVT. LTD.

TRUPULSE® 360 LASER

Measurement Solutions

1-Shot = 5 Values

3-Shot Height

2-Shot 3D Missing Line

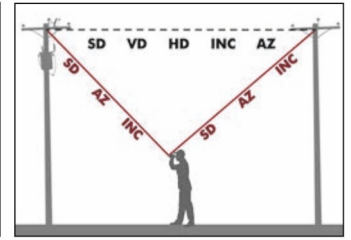
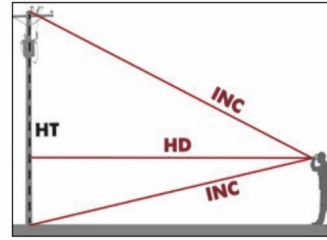
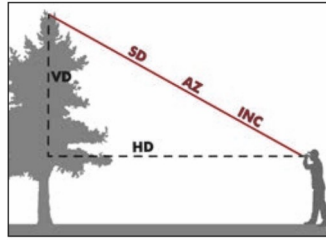
Measured by TruPulse:



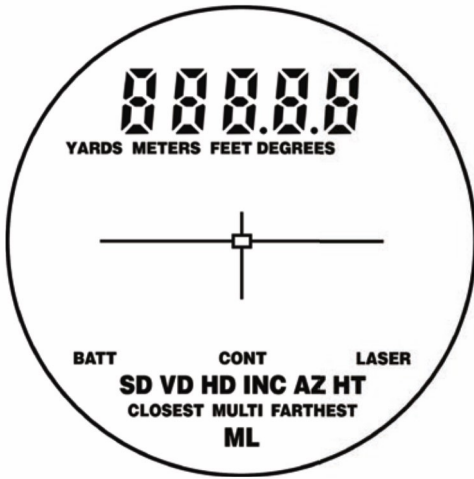
Calculate by TruPulse:



HD = Horizontal Distance
 VD = Vertical Distance SD = Slope Distance
 INC = Inclination HT = Height
 ML = Missing Line AZ = Azimuth



LCD In-Scope Display



Specifications

Distance Accuracy to Typical Targets	± 0.2 m (8 in)
Distance Accuracy to Weak Targets	± 1 m (3 ft)
Inclination Accuracy	± 0.25° Typical
Max Range to Reflective Targets	2000 m (6,560 ft)
Max Range to Non-Reflective Targets	1000 m (3,280 ft)
Azimuth Accuracy	<0.5° RMS; typical
Communication (COM Port / Bluetooth)	RS-232 / Windows + Android
Scope Magnification	7×
In-Scope Field of View	10 m @ 91.5 m away (33 ft @ 300 ft)
Environmental Rating	Water-resistant / IP54
Temperature Range	-20° to 60° C (-4° to 140° F)
Battery Type (8 hrs. of continuous use)	(2) AA or (1) CRV3
Size L x W x H	12 x 5 x 9 cm (5 x 2 x 3.5 in)
Weight	285 g (10 oz)

Targeting Modes Measurement Solutions

Closest: Distinguishes near and far objects and identifies the closest target
Farthest: Distinguishes near and far objects and identifies the farthest target
Continuous: Provides constant updates while shooting multiple targets
Filter: Measures through dense foliage by recognizing only a highly reflective target

Software & Accessories



LaserSoft Measure App:
 Document every measurement you take with LTI's smart device app, and start collecting defensible field data with scope shots and all!



LaserSoft MapSmart App:
 Map, measure or position anything with or without GPS. You can also measure and calculate stockpile volumes.



Hardware Support Brackets:



TruPulse L-Bracket
 (PN#7024746)



TruPulse 360R Mounting Bracket
 (PN#7024866)