

TRUPULSE® 360°R LASER RANGEFINDER



The TruPulse 360°R professional-grade laser rangefinder possesses power and functionality unlike any other measurement and mapping device on the market. Integrated with LTI's exclusive TruVector 360° Compass Technology®, this laser can calculate several different measurement solutions that will help you achieve faster, safer and more accurate results. Having improved performance and a rugged exterior, the 360R model will consistently work under any condition.

New and Improved!

- 33% more range accuracy
- 25% better target acquisition
- Increased azimuth accuracy
- 2-year limited warranty
- Bluetooth® communication included

GIS Mapping

- Seamless integration with popular GPS/GNSS, GIS apps and software solutions for laser offset mapping
- Collect additional attribute data such as heights, spans and multiple values between any two remote points
- Withstands harsh conditions with its ruggedized exterior



TruVector 360° Compass Technology

- Produces accurate and repeatable Azimuth (AZ) results regardless of the tilt or pitch you use to aim the laser
- Recognizes conditions that will affect the reliability of the compass accuracy and prompts you to perform a field calibration

Advanced Targeting

- LTI's reflectorless technology allows you to capture data safely and conveniently to practically any target or surface type
- Capture the correct measurement to your intended target by choosing from any of the 4 targeting modes
- Consistently achieve highly accurate and repeatable results that true professionals need to do their job



© LTI 2018 T301-360R_EN

Ideal Applications



GIS MAPPING

- GPS/GNSS Laser Mapping
- Attribute Data Collection
- Elevation Values



PUBLIC WORKS

- Asset Mapping
- Land Use Planning
- Tree Inventory



NATURAL RESOURCES

- Habitat Mapping
- Archeology
- Stockpile Volumes

TRUPULSE® 360°R LASER

Measurement Solutions

Measured
by TruPulse:

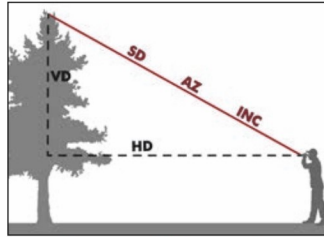


Calculate
by TruPulse:

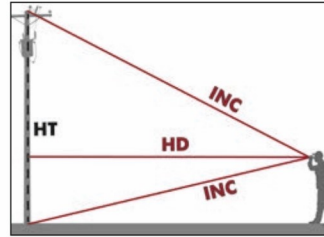


HD = Horizontal Distance
VD = Vertical Distance SD = Slope Distance
INC = Inclination HT = Height
ML = Missing Line AZ = Azimuth

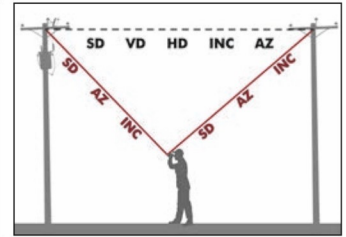
1-Shot = 5 Values



3-Shot Height



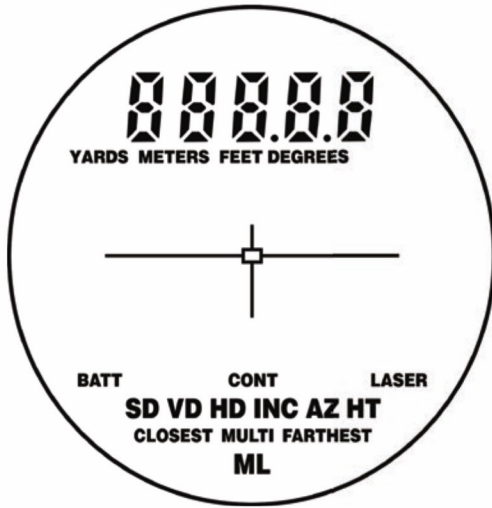
2-Shot 3D Missing Line



Specifications

Distance Accuracy to Typical Targets	± 0.2 m (8 in)
Distance Accuracy to Weak Targets	± 1 m (3 ft)
Inclination Accuracy	± 0.25° Typical
Max Range to Reflective Targets	2000 m (6,560 ft)
Max Range to Nonreflective Targets	1000 m (3,280 ft)
Azimuth Accuracy	± 0.5° RMS; typical
Communication (COM Port / Bluetooth)	Windows® + Android®
Scope Magnificati	7× / LCD
In-Scope Field of View	10 m @ 91.5 m away (33 ft @ 300 ft)
Environmental Rating	Waterproof / IP56
Temperature Range	-20° to 60° C (-4° to 140° F)
Battery Type (8 hrs. of continuous use)	(1) CR123
Size L x W x H	13 x 5 x 11 cm (5.2 x 2.1 x 4.5 in)
Weight	385 g (13.6 oz)

LCD In-Scope Display



Targeting Modes

Closest: Distinguishes near and far objects and identifies the closest target
Farthest: Distinguishes near and far objects and identifies the farthest target
Continuous: Provides constant updates while shooting multiple targets
Filter: Measures through dense foliage by recognizing only a highly reflective target

Software & Accessories



LaserSoft Measure App:
Document every measurement you take with LTI's smart device app, and start collecting defensible field data with scope shots and all!



LaserSoft MapSmart App:
Map, measure or position anything with or without GPS. You can also measure and calculate stockpile volumes.



Hardware Support Brackets:



TruPulse L-Bracket
(PN#7024746)



TruPulse 360R Mounting
Bracket (PN#7024866)