

T&D PRO SOFTWARE SOLUTION

- + Overcoming Challenges
- + Complete Laser Packages
- + Intuitive Workflow
- + In-Field Calculations and Reporting



PARAGON ***I***NSTRUMENTATION ***E***NGINEERS PVT. LTD.

www.lasertech.com

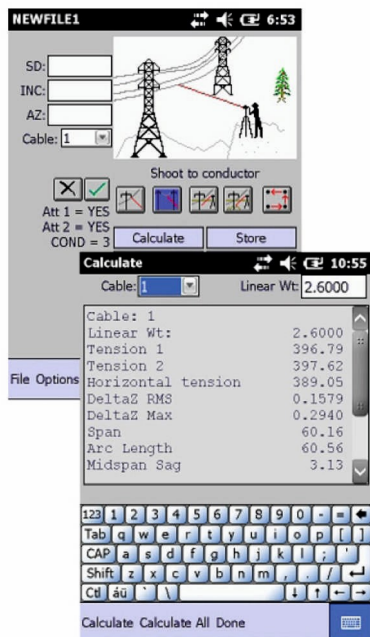
 **LASER_{TECH}**
Measurably Superior®

Overcoming Challenges

Mechanical tools such as measuring wheels and height sticks can be limiting when used during inclement weather or around rough terrain. Total stations are bulky, expensive and require extensive training to operate. LTI's reflectorless measurement technology and intuitive T&D Pro software not only make field measurement quicker and easier, but more importantly, much safer.

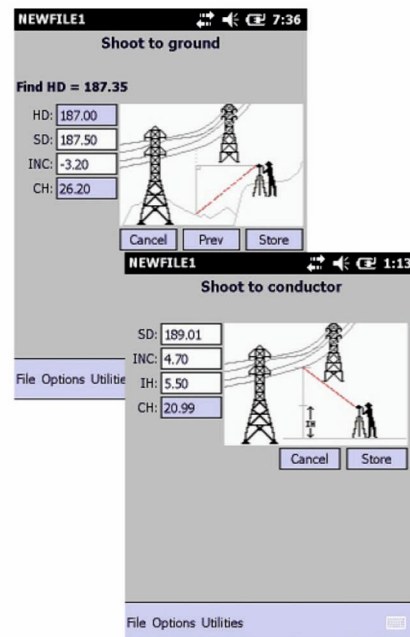
Sag Profile

- Collect data on the attachments and along the entire conductor
- Calculate values for span, sag and tension
- Use angle values when line of sight is compromised
- Identify and record problem areas along the ROW



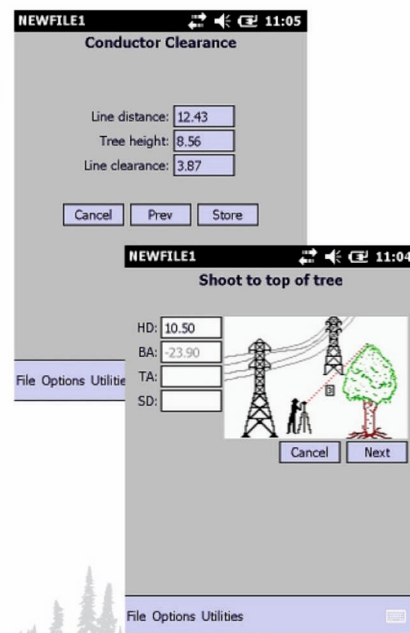
Height

- Obtain accurate height values regardless of the terrain below the line
- Capture the measurements you need and get instant results in the field
- Collect and store multiple height and clearance values



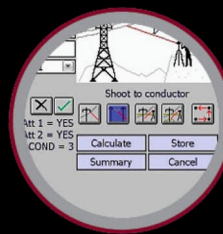
Clearance

- Quickly determine conductor clearance to danger trees
- Avoid rough terrain by positioning yourself at the tree or under the conductor
- Stay on budget and more efficient by identifying exactly what needs to be cut



ONE-PERSON OPERATION

Save time, money and resources with a system that can be operated by just one person.



TOUCH SCREEN ACTIVATION

T&D Pro software is easy to navigate with intuitive icons and simple taps on the screen.



SHOOT DIRECTLY TO CONDUCTOR

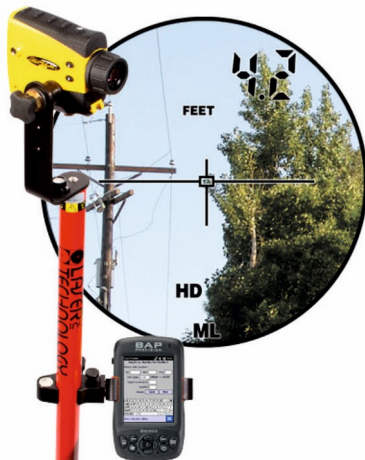
All TruPulse lasers can acquire a measurement to the smallest of targets.

Complete Laser Packages

Obtain highly accurate results in less time and for less money than any alternative measurement system on the market. LTI lasers acquire a measurement directly to a conductor regardless of how thin the line may be.

TruPulse® 200/360°

- Calculates height, horizontal distance and missing line values
- Enhances your field of view with quality optics
- Integrates with most GPS products via serial port or Bluetooth®



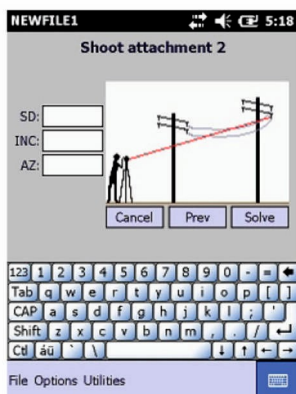
TruPulse® 200X + MapStar® TruAngle®

- Achieves the highest distance, angle and inclination accuracy
- Measures precise horizontal angles and can be used around steel structures
- Produces optimal span, sag and tension results



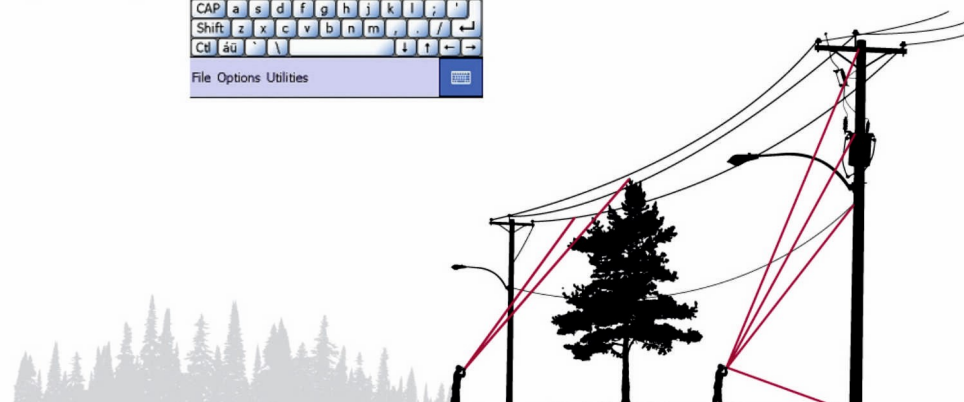
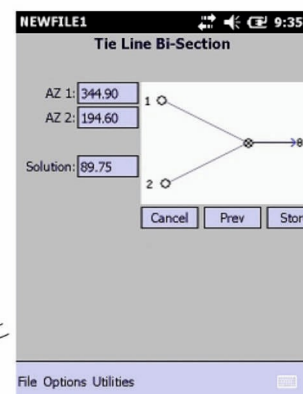
Missing Line & Slope

- Instantly calculate slope, horizontal and vertical distance, inclination and azimuth between two points
- Collect and record span lengths, remote slope determinations and changes in elevation
- Be safe and save time by avoiding dangerous areas



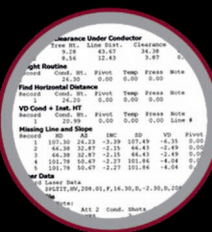
Tie-Line Bisection

- Easily determine the direction that a tie line or guy wire should be extended
- Measure angles from one wire to another, and to the ground, to ensure the guy load is properly distributed



IN-FIELD CALCULATIONS

Instantly generate all the data you need in the field, without any post-processing on your desktop, or export data for CAD programs.



REPORTING

Easily transfer your field data and export it all to Excel. Create professional reports and graphs with minimum effort.



DATA COLLECTOR COMPATIBILITY

T&D Pro works on any QVGA or VGA Windows Mobile 6.0 or newer data collector.

Software Specifications

	T&D Pro
Computer Requirements (for installation on a data collector)	Microsoft® Windows® Vista, Windows 7 or Windows 8, with Windows Mobile Device Center installed or Windows XP with Microsoft ActiveSync installed
Data Collector Requirements (Does not support smartphones running Windows Mobile or data collectors running Windows Mobile 5)	Microsoft Windows Mobile 6.0 or greater 300 KB memory for application Display Resolutions: QVGA (320x240) or VGA (640x480)
Connectivity	Connection cable or Bluetooth®
Hardware	Any Laser Technology, Inc. TruPulse® or Impulse 200 laser model
Supported Languages	English, Croatian, Czech, French, Korean & Polish; templates available for additional translations

Laser Specifications



	TruPulse® 200/B	TruPulse® 200X	TruPulse® 360°/B	TruPulse® 360°R
Measures Azimuth with TruVector Compass Technology	No	No	Yes	Yes
Distance Accuracy to Typical Targets	± 30 cm (1 ft)	± 4 cm (1.6 in)	± 30 cm (1 ft)	± 30 cm (1 ft)
Inclination Accuracy	± 0.25° Typical	± 0.1° Typical	± 0.25° Typical	± 0.25° Typical
Max Range to Reflective Targets	2000 m (6,560 ft)	2500 m (8,200 ft)	2000 m (6,560 ft)	2000 m (6,560 ft)
Max Range to Non-Reflective Targets	1000 m (3,280 ft)	1900 m (6,233 ft)	1000 m (3,280 ft)	1000 m (3,280 ft)
Bluetooth® Com Port	B model has Android	iOS and Android	B model has Android	Android
Scope Magnification / In-Scope Display Type	7× / LCD	7× / LED	7× / LCD	7× / LCD
Waterproof / Environmental	No / IP54	Yes / IP56	No / IP54	Yes / IP56
Size L x W x H	12 x 5 x 9 cm (5 x 2 x 3.5 in)	13 x 5 x 11 cm (5.2 x 2.1 x 4.5 in)	12 x 5 x 9 cm (5 x 2 x 3.5 in)	13 x 5 x 11 cm (5.2 x 2.1 x 4.5 in)
Weight	285 g (10 oz)	382 g (13.5 oz)	285 g (10 oz)	385 g (13.6 oz)
Available Colors	Yellow Grey	LTI Red	Yellow Grey	Black

© LTI 2015 1305 EN